

THE SYNCHRONIZED REPRODUCTION OF *PORITES RUS*



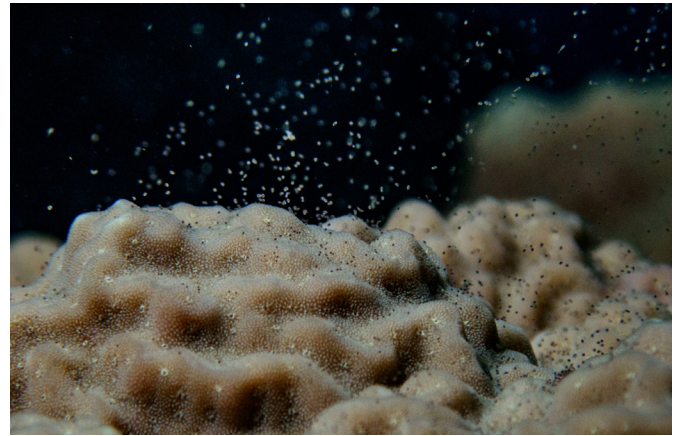
Porites rus is a **gonochoric species**, meaning that colonies are either male or female. Spawning occurs in the morning and simultaneously over large distances. It is possible to predict the exact day and time based on the moon and the sun.

MALE SPAWNING



Forms a white 'cloud' around the colony. The phenomenon begins with a light veil that gradually intensifies and becomes a dense cloud.

FEMALE SPAWNING



Starts about 20 minutes after the males. The 0.5 mm eggs are oval in shape and less visible than the male sperm cloud. Use an underwater magnifying glass to see them better.

WHEN CAN SPAWNING BE OBSERVED ?

In the morning of the 5th day after the full moon



1:30 AM after sunrise for massive/branching colonies.



5 AM after sunrise for plates colonies.

Porites rus is present in all coral reefs of the **Pacific and Indian Oceans**.

SPAWNING PERIOD

Southern Hemisphere : From November to April

Northern Hemisphere : Research in progress